

What's in the Box

Product Overview

How to Use

Specifications

What's in the Box

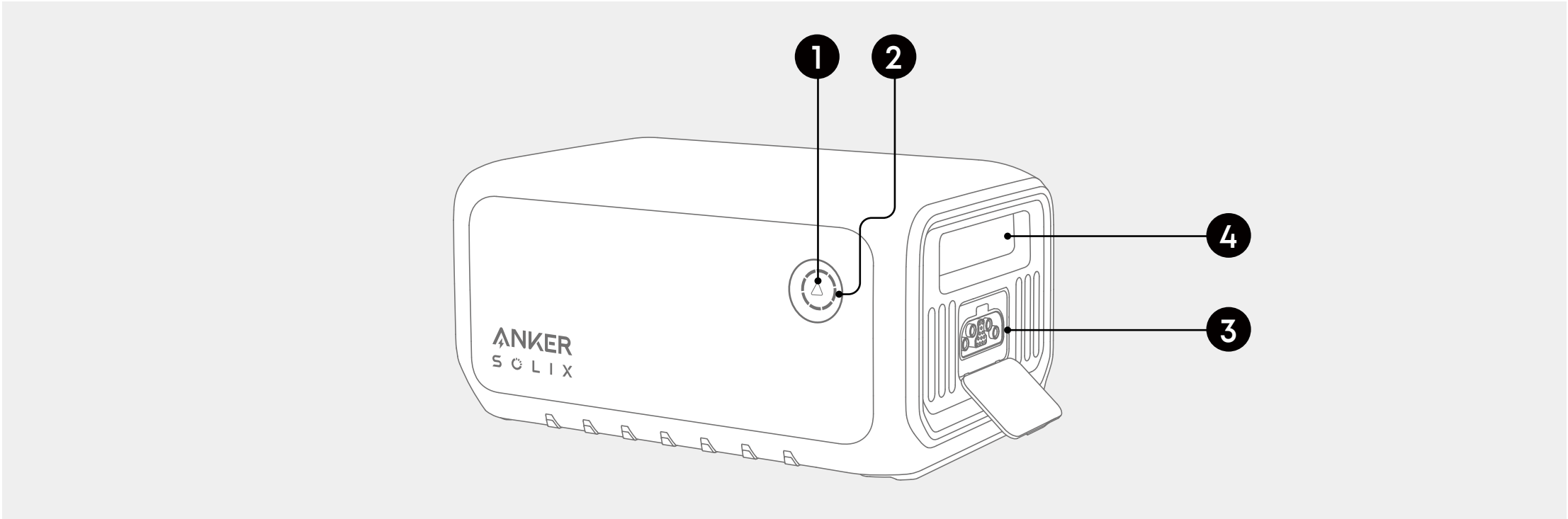
Anker SOLIX BP2000
Expansion Battery (Gen 2)

Expansion Battery
Charging Cable

Documents

*The expansion battery must be connected to the power station for charging and discharging and cannot be used separately.

Product Overview



- 1 On/Off Button
- 2 LED Wheel
- 3 Expansion Battery Port
- 4 Handle

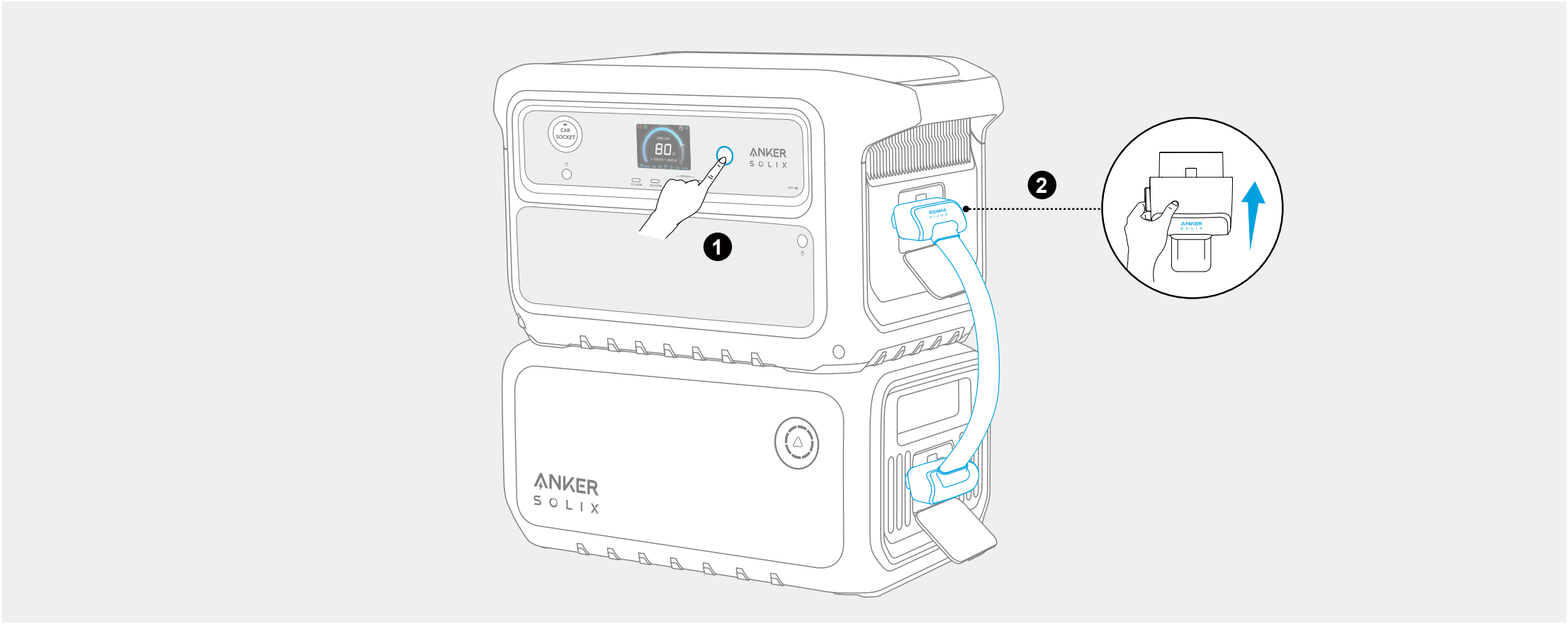
On/Off Button: Press the button for 3 seconds to turn the expansion battery on or off.


Expansion Battery Port: Connect the expansion battery to the power station with the expansion battery charging cable via this port.

LED Wheel: Flashes blue continuously while charging. When not charging, short press the on/off button to illuminate the light wheel and display the current battery level.

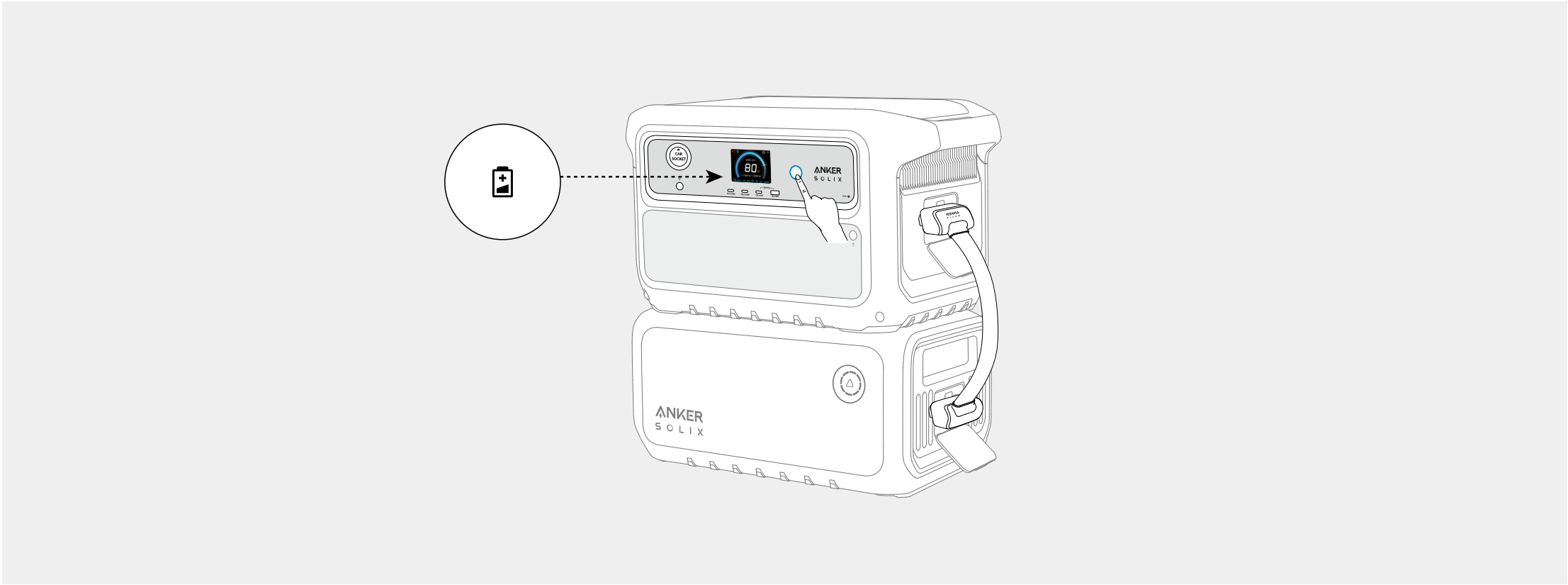
How to Use

Power on the power station and connect the expansion battery to the power station with the charging cable. Ensure the Anker SOLIX logo on the charging cable faces outward. You will hear a beep if the connection is successful.

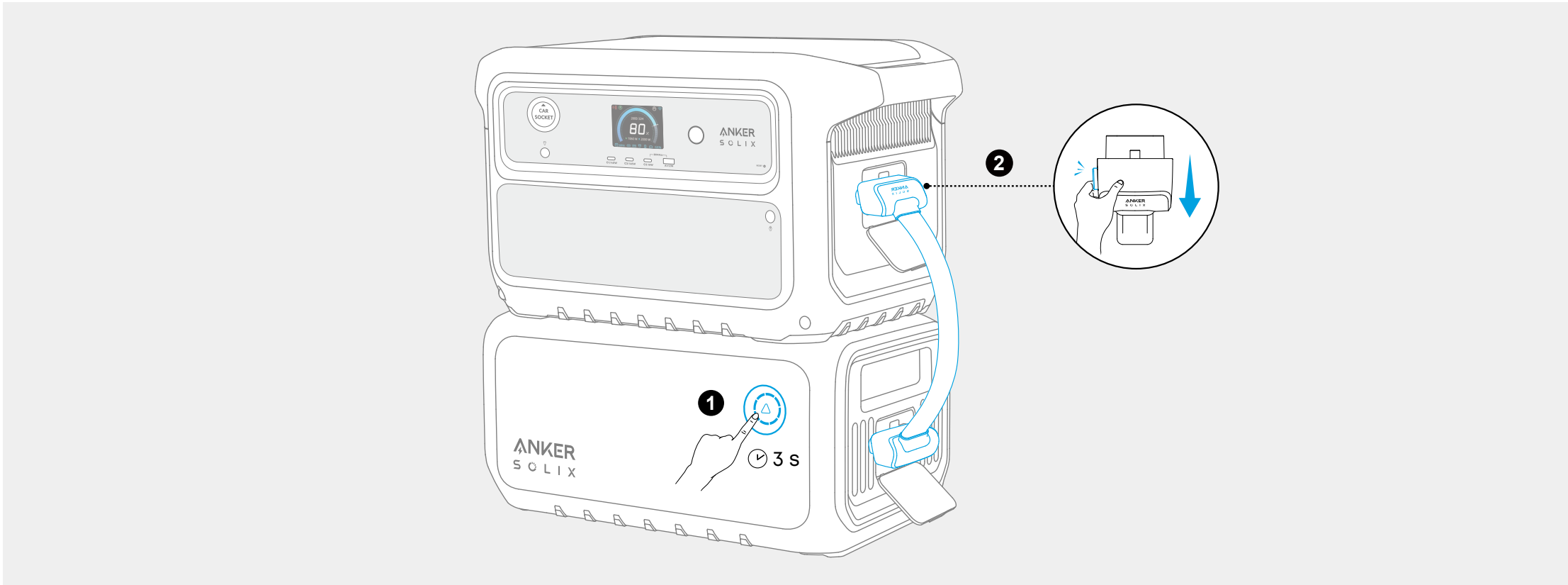


If your power station is powered on and the expansion battery is successfully connected, the <  > and the remaining power level of the expansion battery will appear on the power station's screen.

- **Discharging:** The connected expansion battery will be discharged prior to the power station.
- **Recharging:** The connected expansion battery will be charged after the power station is fully charged.



If you need to disconnect the power station from the expansion battery during use, press the on/off button of expansion battery for 3 seconds to turn it off. Then unplug the charging cable.



Specifications

Capacity	51.2 Vd.c. / 40000 mAh / 2048 Wh
Voltage Range	40V to 58.4V
Expansion Battery Port Charging	58A Max
Expansion Battery Port Discharging	77A Max
Battery Type	LiFePO4
Compatible Power Station	Anker SOLIX C2000 Gen 2 Portable Power Station, Anker SOLIX C2000X Gen 2 Portable Power Station, Anker SOLIX C2000 Gen 2 Plus Portable Power Station
Max. Short Circuit Current and Duration	1300A / 5 ms
Discharging Temperature	-20°C to 40°C / -4°F to 104°F
Charging Temperature	0°C to 40°C / 32°F to 104°F
Net Weight	15.3 kg / 34 lb
Dimensions	395.5 × 197.5 × 229 mm / 15.57 × 7.78 × 9.02"